



N-BM260W Pro Intermediate Multi Bio



Face



Finger



RFID



Battery
(Optional)



WiFi



LAN



USB

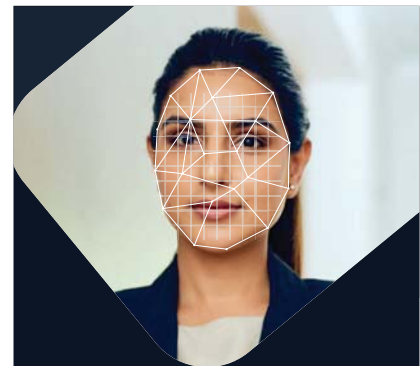


Access
Control

Multi-Bio Attendance and Access Control

Storage Capacity

Face Capacity	1200
Finger Capacity	3000
Card Capacity	2000
Max User	2000
Log Capacity	1,50,000



N-BM260W Pro

"N-BM260W Pro hands out reliable performance leading to customer satisfaction with its user friendly interface."

Features

High-Speed and Accurate Face Identification

Good adaptation for dry, moist and rough fingerprints.

Output relay for door open.

Face, Fingerprint, Card, Password authentication.

Supremely low Electric energy consumption.

Highly reliable and durable.

Comprehensive SDK is available for development and integration.

N-BM260W Pro

Communication Interface

Communication	WIFI, TCP/IP, USB
---------------	-------------------

Biometric

Push Data	Yes
Sensor type	500 DPI
FAR	0.00001%
FRR	0.001%
OS	Linux
Verification time	<=1 second
RF card options	125kHz EM (Standard) / 13.56MHz Mifare (Optional)

Audio/Visual

LCD	2.8" TFT color screen
Voice instruction	16-bit Hi-Fi voice & sound indication
Language	English

Access control

Wiegand in & out	YES
Relay	YES
Support Exit Reader	Wiegand Reader
	Remote, Push Button, No Touch

Power & Environment

Battery	Yes (Optional)
Operating Temperature	0°C ~ 50°C
Power	12V DC / 2A
Dimension (L*H*W)	175 x 120 x 95 mm



Auto Focus



low light Verification



Long Distance Verification



Accepts Color Finger

Software

Desktop, Web, Cloud



Time Attendance



Access Control



Employee Self Service



Mobile App

Disclaimer : Brief specifications are mentioned here. specification may change without prior notice. Customers are advised to check with us before purchase. Actual product may differ slightly to that depicted for ongoing product development.

Certified by    

www.biomaxsecurity.com

Connect with us on

 BiomaxOfficial  BioMax Security
 biomaxsecurity  BioMax Access Control